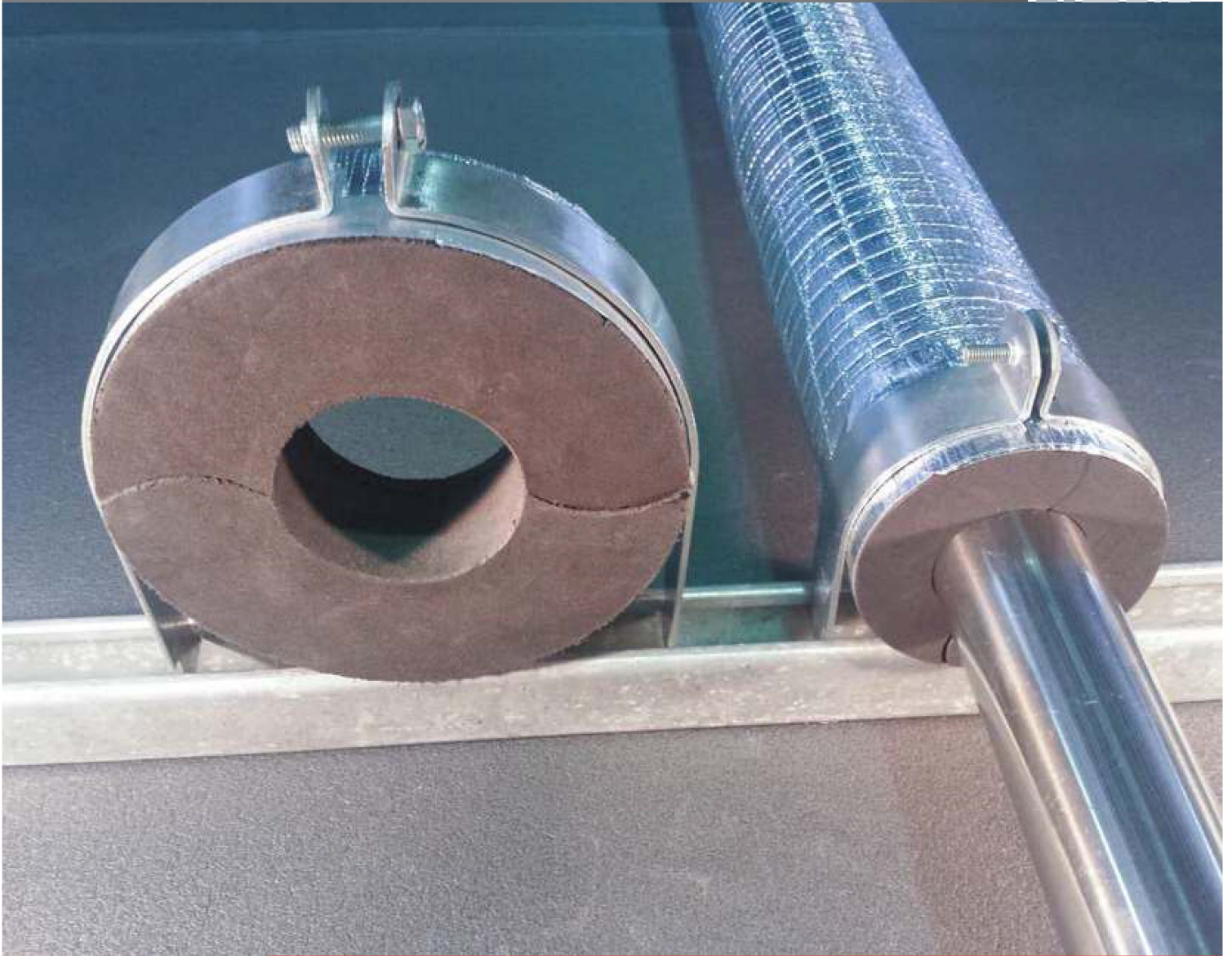


# **THERMOBREAK<sup>®</sup>** *Thermaloc*

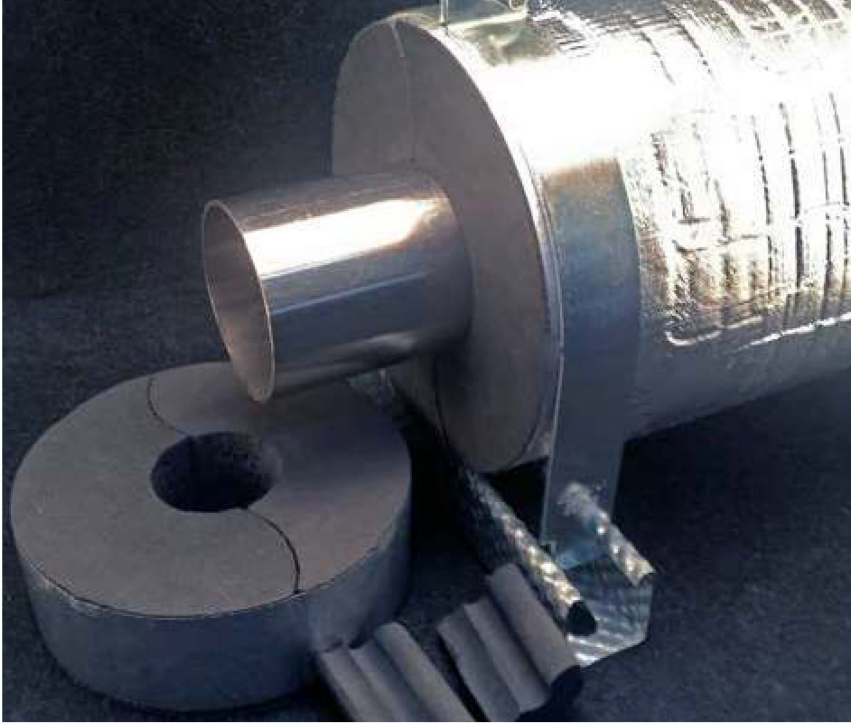
***HOT & COLD PIPE SUPPORTS***



Thermobreak<sup>®</sup> Thermaloc is a lightweight and extremely tough closed cell polyethylene foam pipe support.

**SEKISUI**

**FOAM**  
INTERNATIONAL  
Global Foam Solutions



# Thermaloc

## Thermaloc Hot & Cold Pipe Supports

Light weight and extremely tough Thermobreak® Thermaloc is a high density, closed cell, cross linked polyethylene polymer foam pipe support for hot and cold applications.

### Easy & Safe to Install

Thermaloc installation is as simple as placing the two pieces over the pipe, squeezing together gently and applying foil tape (supplied separately). No cutting means no fibres, no dust, no mess to clean up afterwards and no need for protective face masks and gloves.

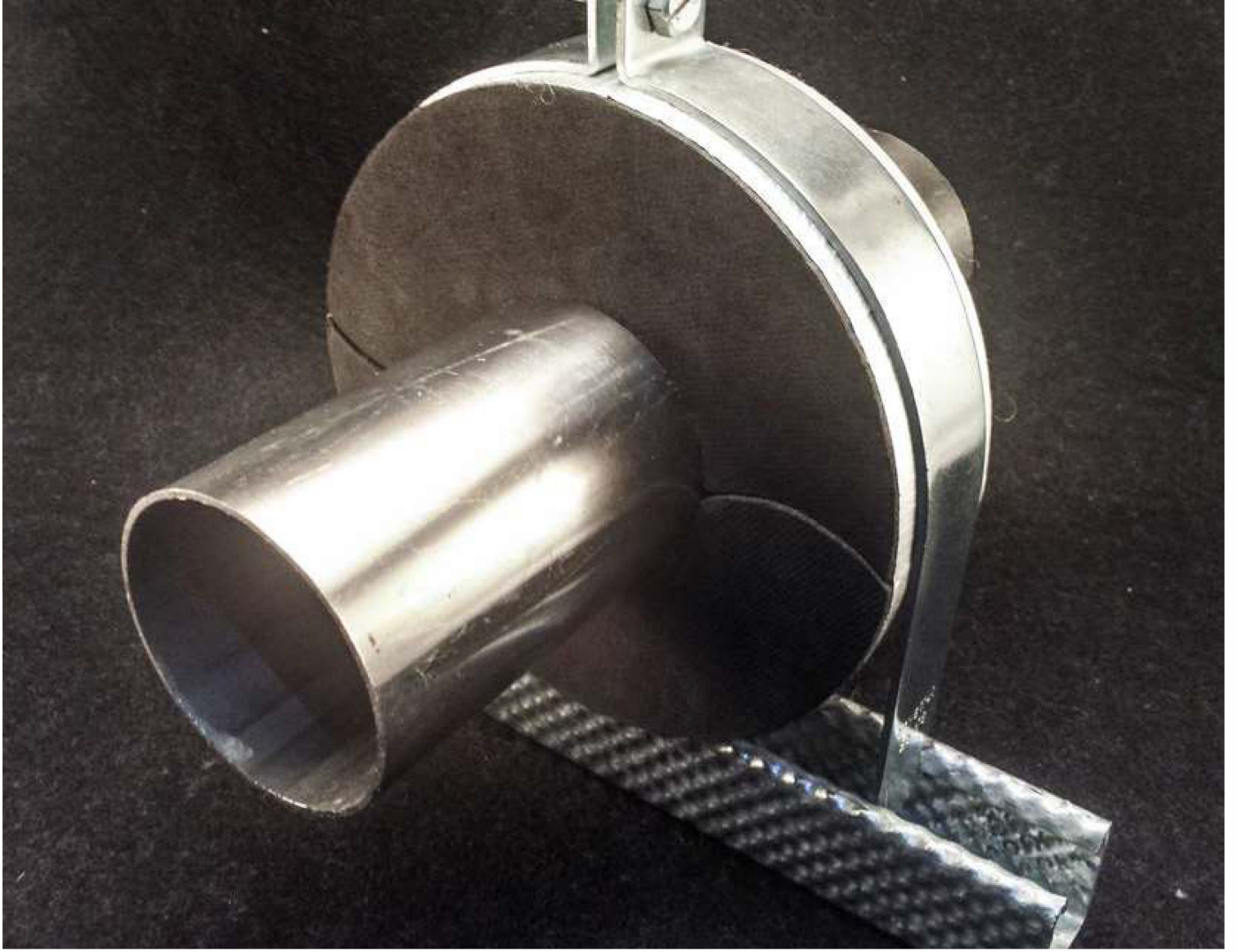
Thermaloc is Green Star compliant (Low VOC), has Zero Global Warming Potential (GWP) and is manufactured without ozone destroying agents such as CFCs or HCFCs.

### Built to Perform, Built to Last

Thermaloc's closed cell technology is unaffected by water and humidity as well as being resistant to detergents, diluted acids, alkalis, alcohols, esters and fungi ensuring performance in even the most demanding applications and over the life of the installation.

Once sealed, Thermaloc's profile ensures an airtight finish preventing potential air condensation especially in cold line applications. Thermaloc's high density foam also absorbs pipe contraction and expansion movements preventing gap formation and erosion of the ferrule over time.





## HOT & COLD PIPE SUPPORTS

### Physical Properties

Material:	Crosslinked Closed Cell Polyolefin Foam
Density:	300 kg/m <sup>3</sup>
Moisture absorption by volume: (internal)	<1% w/w
Resistance to fungi:	Good
Ozone Resistance:	Excellent
UV Resistance:	Excellent
Operating Temperature Range:	-40°C to 105°C
Thermal Conductivity: (ASTM C518)	0.069 W/mK
VOC Emission Rate: (ASTM D5116)	Low VOC Emitting ("Green Star")
Compression Strength: (internal)	850 kPa @ 10% deflection 970 kPa @ 25% deflection 1540 kPa @ 50% deflection

### Fire and Smoke Performance

BS 6853 Annex B (Smoke Toxicity)	Complies (R <1.0)
AS 1530 Part 3 Flammability (Foil Tape Faced)	Complies (AS 4254)

### Size Availability

#### Nominal ID A (mm)

Sizes:	6.35 to 450
Materials:	Available in Copper, IPS & PPR

#### Nominal Thickness B (mm)

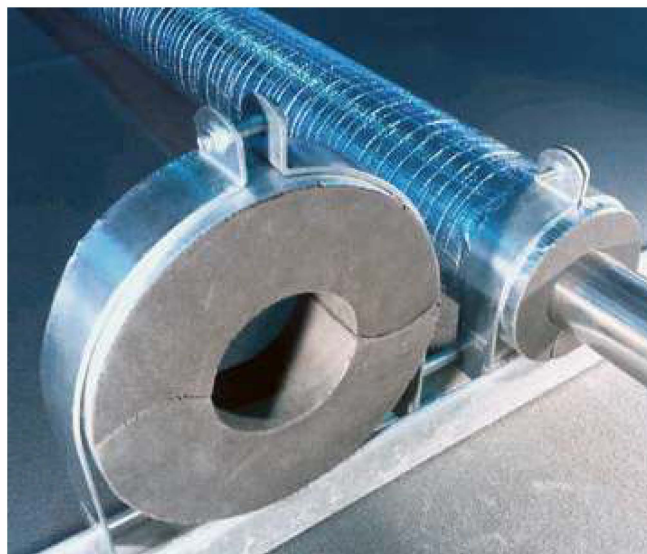
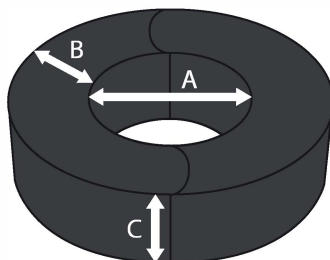
13	40
15	50
25	55
30	63

\*Other wall thicknesses available on request

#### On Pipe Length C (mm)

50	75 (available on request)
----	---------------------------

\*\*Flat based Thermaloc available for pipe sizes DN 100 / NPS 4 & above



Distributed by



Ecowise Insulation Solutions Pty. Ltd.  
Rear of Unit 3, 20 Tucks Road  
Seven Hills, NSW 2147  
Phone: (02) 9624 2111  
Email: [sales@ecowiseinsulation.com.au](mailto:sales@ecowiseinsulation.com.au)

Thermobreak is a registered trademark of Sekisui Chemical Co. Ltd. or its subsidiaries.

# SEKISUI

# FOAM INTERNATIONAL

Global Foam Solutions



#### Head Office

1-5 Parraweena Rd, PO Box 2898,  
Taren Point NSW 2229 Australia  
Tel: +61 2 9525 9880  
Fax: +61 2 9525 8004  
Email: [info@sekisuifoam.com.au](mailto:info@sekisuifoam.com.au)  
Web: [www.sekisuifoam.com.au](http://www.sekisuifoam.com.au)

#### Queensland Branch

15/853 Nudgee Rd PO Box 448  
Northgate QLD 4013 Australia  
Tel: +61 7 3267 7100  
Fax: +61 7 3267 7166  
Email: [info@sekisuifoam.com.au](mailto:info@sekisuifoam.com.au)  
Web: [www.sekisuifoam.com.au](http://www.sekisuifoam.com.au)