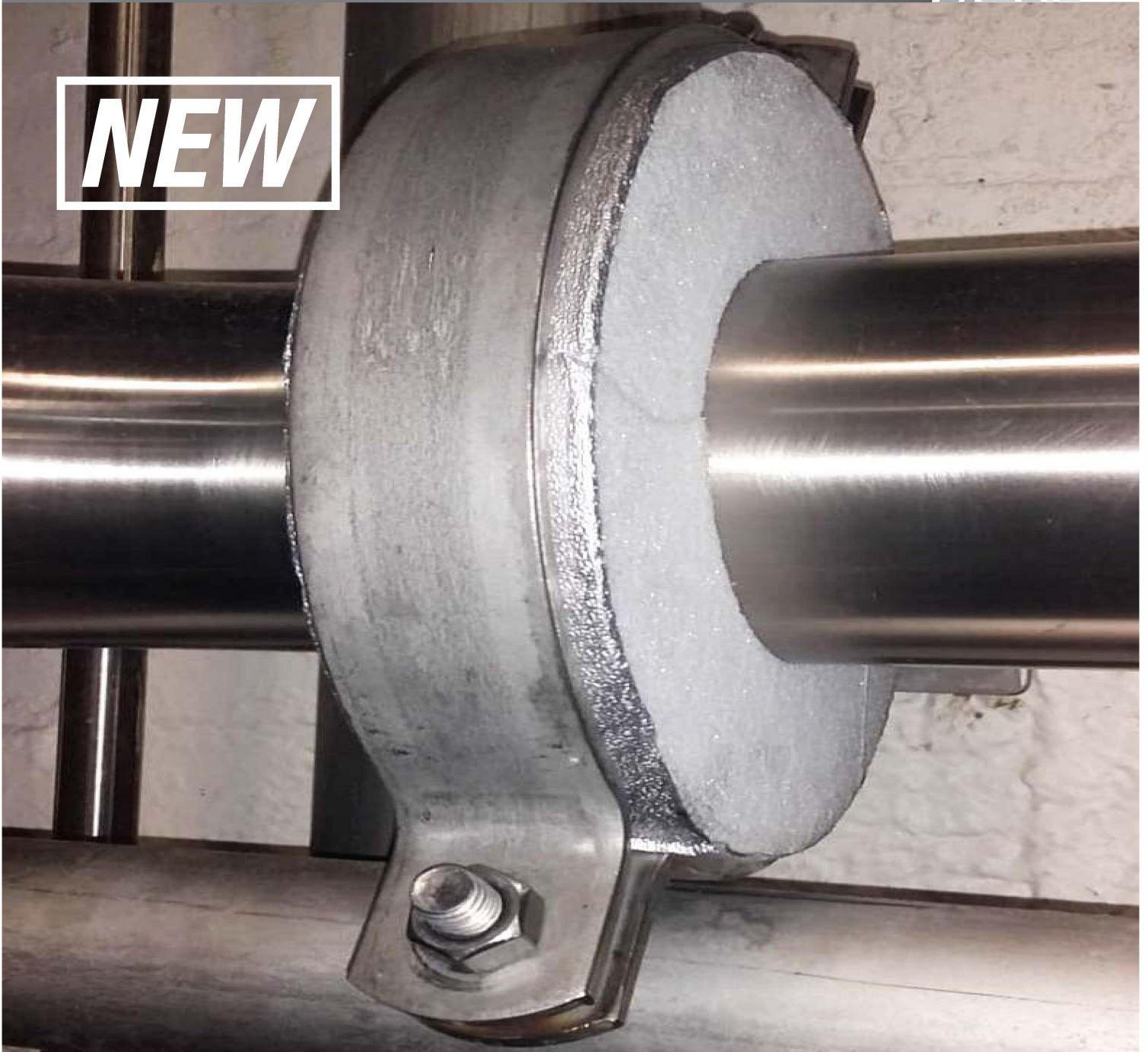


# **THERMOBREAK<sup>®</sup> Thermaloc XT**

**HOT & COLD PIPE SUPPORTS**

**NEW**



Thermobreak Thermaloc XT is a new generation closed cell foam pipe support offering superior compression performance, an extremely low k value and excellent heat resistance.

**SEKISUI**

**FOAM**  
**INTERNATIONAL**  
Global Foam Solutions

**PHYSICALLY**  
**CROSSLINKED**  
SEKISUI TECHNOLOGY

# THERMOBREAK<sup>®</sup> Thermaloc XT

## TECHNICAL SPECIFICATIONS

### Product Features

Thermobreak XT is the latest innovation in pipe supports from Sekisui Foam Australia featuring:

- > Improved K value of 0.037 w/mK
- > High compression resistance, which allows Thermobreak Thermaloc XT to bear the weight of heavier pipes.
- > Excellent chemical resistance.
- > Closed cell so will not absorb moisture or degrade over time.
- > Quick and safe application.
- > Superior heat resistance compared to other pipe supports on the market.
- > Compliant to AS1530.3 as required by the NCC of Australia (when foil faced):

Ignitability Index	0
Spread of Flame Index	0
Heat Evolved Index	0
Smoke Develop Index	2

### Physical Properties

Material:	Closed cell rigid foam
Density:	100kg/m <sup>3</sup>
Thermal Conductivity:	0.037 W/mK
Compression Strength: (internal)	1128 kPa @ 10% deflection 1263 kPa @ 25% deflection
Ozone Resistance:	Excellent
UV Resistance:	Excellent
Water absorption by volume:	< 1% v/v
Resistance to fungi (foil faced): (ASTM G21)	Good
Leachable Chlorides: (ASTM C871)	< 12 ppm (< 0.0012% w/w)

Thermobreak<sup>®</sup> is a registered trademark of Sekisui Chemical Co. Ltd. or its subsidiaries.

### Size Availability

**Wall thickness available:** 13mm, 15mm, 20mm, 30mm, 40mm, 50mm, 63mm and made to order wall thickness and ID.

**Length on pipe:** 50mm is the standard supplied thickness however Thermaloc XT can be joined together in multiples of 50mm to provide longer lengthblocks such as 100mm, 150mm & 200mm

### Benefits of Thermaloc XT

#### Shear & Tensile Strength and Crush Resistance

Pipes contract and expand when undergoing swift temperature changes and can put a lot of force on a pipe support.

Thermaloc XT is a highly engineered material, designed to withstand extreme shear & tear strengths, temperature fluctuations and pressure from pipe movements.

#### Superior Thermal Properties

Thermaloc XT has a k value of 0.037 w/mK, which is in line with Thermobreak pipe insulation. These improved thermal properties in combination with the closed cell material mean greater protection from sweating and moisture absorption.

#### Hardness

Thermaloc XT has an exceptionally high compressive strength allowing for larger weights to be supported.

**\*\*Note:** The force on a pipe support varies in accordance with the pipe size, the pipe type and the spacing from one pipe support to the next.

#### Heat Resistance

Traditional pipe supports are commonly limited to a maximum operating temperature of 100 deg C. Thermaloc XT is made from an innovative new material that can be used in temperatures up to 150 degrees C without compromising compressibility of the bloc.

\*subject to pipe, size, & spacing between blocs. Contact Sekisui for further advice.

Distributed by



Ecwise Insulation Solutions Pty. Ltd.  
Rear of Unit 3, 20 Tucks Road  
Seven Hills, NSW 2147  
Phone: (02) 9624 2111  
Email: sales@ecwiseinsulation.com.au

**SEKISUI** | **FOAM**  
INTERNATIONAL  
Global Foam Solutions



**Sekisui Foam Australia  
Head Office**  
1-5 Parraweena Rd, PO Box 2898,  
Taren Point NSW 2229 Australia  
Tel: +61 2 9525 9880  
Fax: +61 2 9525 8004  
Email: info@sekisuifoam.com.au  
Web: www.sekisuifoam.com.au

**Queensland Branch**  
15/853 Nudgee Rd, PO Box 448,  
Northgate QLD 4013 Australia  
Tel: +61 7 3267 7100  
Fax: +61 7 3267 7166  
Email: info@sekisuifoam.com.au  
Web: www.sekisuifoam.com.au